

## Handshake Partnership Program Final Project Close-Out Report

1. Fiscal Year Selected as Winning Project: FY22
2. Name of Corps Project/Lake: Wright Patman Lake
3. District / Division of Corps Project/Lake: SWF/SWD
4. Handshake Project Name: Piney Point Disc Golf Course (Formerly: Caddo Ridge Disc Golf Course)
5. Amount of Handshake Funds remaining: \$0.00
6. What has been accomplished? Please provide photographs; before, during, and after!:



Hole # 16 on the edge of the levee

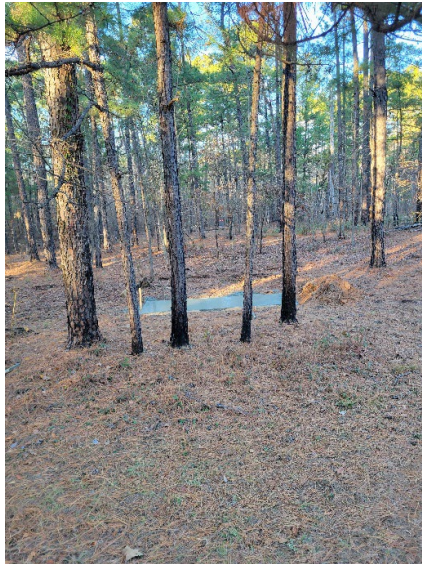
Wright Patman Lake and several partners have completed an 18 hole Disc Golf Course between Spillway Park and Piney Point Campground, strategically located near 3 campgrounds where travelers and locals can enjoy a challenging and fun outdoor experience in a sport that is growing exponentially every year. This course was previously 9 holes and orientated in the large open field known as Spillway Park. The old layout did not allow for much challenge or an outdoor feel that most disc golf enthusiasts look for. Installation was performed in conjunction with Texarkana Disc Golf Association, Holt Repair, Shreveport-Bossier Disc Golf Union, Lowes, Dynamic Discs NW Arkansas, Longview Disc Golf Association, Camden Disc Golf Association, Big Jakes BBQ, Turner Landscaping, and Troop 30 Eagle Scouts.





Site layout testing

This opportunity allowed both USACE and the partner to work together to complete a needed project for the community, as no championship level disc golf courses existed within a 2 hour drive. Working together continued the relationships and introduced new members to each other in a healthy, physical environment to accomplish a goal orientated mission.



Concrete pad development





Eagle Scout foot bridge



Course construction process





Hole 15, before and after

This disc golf course has already been rated as one of the top courses in Texas and the Arklatex area with the first fall tournament scheduled in October with 72 contestants signed up already. With the help of our partners, the community now has a top tier recreational opportunity that was lacking in the area. The course has already created a spike in visitation, with participants driving from three hours away to check out the new opportunity.



Hole 12, before and after





Fairway clearing



Catch bucket







Late evening play

	<b>Total</b>
<b>Handshake Program Funding Amount</b>	\$25,000
<b>Local Corps Office Funds</b> (total expended on labor, materials, contracts, etc.)?	\$21,457.04
<b>Partner's Contributions</b> (total value of funds, goods, services, volunteer hours, etc.)	
<b>Partners Name</b>	<b>Total Value of Contributions</b>
1 Texarkana Disc Golf Course	\$84,371.30
2 Holt Repair	\$24,926.42
3 Shreveport-Bossier Disc Golf Union	\$301.41
4 Lowes	\$250.00
5 Dynamic Discs NW Arkansas	\$234.43
6 Longview Disc Golf Association	\$468.86

7 Camden Disc Golf Association	\$167.45
8 Big Jakes BBQ	\$150.00
9 Turner Landscaping	\$234.43
10 Troop 30 Eagle Scouts Luke McEntire and Cody Roberts	\$803.76

## **6. Handshake Program Recipient Feedback**

Please take this opportunity to provide feedback on all aspects of the Handshake Program and the Challenge Partnership Agreement authority. Your productive comments are important to the ongoing improvement of the program. Make sure to let us know how the Handshake funds have benefited your efforts to initiate and/or strengthen your partnerships.

This project has increased public usage of our natural resource areas in a productive way. The area Wright Patman utilized was known for vandalism and illegal activity, in which the area sat underutilized. With the increased positive use through disc golf, the area has become one of the most beautiful and well used areas at the project. The Handshake program and associated newly developed relationships and partnerships have provided the public an asset that simply would not have been possible. These partnerships have further enhanced the Corps' reputation as the leading provider of outdoor recreational opportunities in the area.

7. Handshake Summary: Please also include a separate newspaper type article describing the project and the benefit to the Corps of Engineers and to the public as a result of this partnership project. Examples can be found on the gateway under Handshake Success Stories.





US Army Corps  
of Engineers®

## Piney Point Disc Golf Course Wright Patman Lake Handshake Agreement (2022 – 2024)

Wright Patman Lake and several partners have completed an 18 hole Disc Golf Course between Spillway Park and Piney Point Campground, strategically located near 3 campgrounds where travelers and locals can enjoy a challenging and fun outdoor experience in a sport that is growing exponentially every year. This course was previously 9 holes and orientated in the large open field known as Spillway Park. The old layout did not allow for much challenge or outdoor feel that most disc golf enthusiasts look for. Installation was performed in conjunction with Texarkana Disc Golf Association, Holt Repair, Shreveport-Bossier Disc Golf Union, Lowes, Dynamic Discs NW Arkansas, Longview Disc Golf Association, Camden Disc Golf Association, Big Jakes BBQ, Turner Landscaping, and Troop 30 Eagle Scouts Luke McEntire and Cody Roberts. This opportunity allowed both USACE and the partner to work together to complete a needed project for the community, as no championship level disc golf courses existed within a 2 hour drive. Working together continued the relationships and introduced new members to each other in a healthy, physical environment to accomplish a goal orientated mission. This disc golf course has already been rated as one of the top courses in Texas and the Ark-La-Tex area with the first fall tournament scheduled in October with 72 contestants signed up already. With the help of our partners, the community now has a top tier recreational opportunity that was lacking in the area.



The course has already created a spike in visitation, with participants driving from three hours away to check out the new opportunity. This project has increased public usage of our natural resource areas in a productive way. The area Wright Patman utilized was known for vandalism and illegal activity, in which the area sat underutilized. With the increased positive use through disc golf, the area has become one of the most beautiful and well used areas at the project. The Handshake program and associated newly developed relationships and partnerships have provided the public an asset that simply would not have been possible. These partnerships have further enhanced the Corps' reputation as the leading provider of outdoor recreational opportunities in the area.